

CERTIFICATE OF LOCATION OF GOVERNMENT CORNER

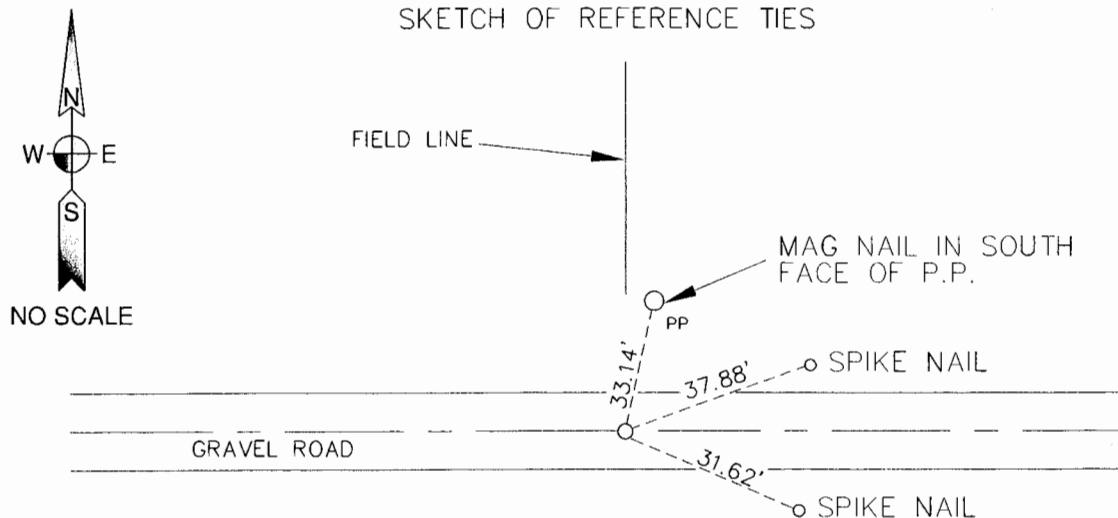
SOUTH 1/4 Corner of Section 31, Township 105N, Range 42W, 5th P.M.

STATE OF MINNESOTA, County of MURRAY

At the corner location shown on the sketch:

- On _____ found a _____
DATE
- left monument as found, lowered monument, removed monument (explain)
- On 3-4-08 placed a 5/8" REBAR WITH RLS "40827" CAP 0.3'
DATE
- BELOW GRAVEL SURFACE

SKETCH OF REFERENCE TIES



MURRAY CO. COORDS
N 100335.121
E 455780.474

NO OTHER TIES AVAILABLE
BEARING SYSTEM IS BASED ON MURRAY COUNTY COORDINATES

- MONUMENT INPLACE
- MONUMENT SET

Statement of evidence relative to this corner location is on back of page.

I hereby certify that this document and the data contained herein was prepared by me or under my direct supervision.

[Signature] 3-17-08
SURVEYOR'S NAME DATE

Registration No. 40827

- Land Surveyor, Professional Engineer
- County Surveyor, County Engineer

OFFICE OF THE COUNTY RECORDER

County of MURRAY

I hereby certify that this document was filed in the Co. Recorders office at _____ .M. on the _____ day of _____ A.D., 20_____

County Recorder [Signature]

By _____, Deputy

DOCUMENT NO. MAR 18 2008

STATEMENT OF EVIDENCE:

___SOUTH 1/4___ CORNER, SECTION 31, T. 105 N., R. 42 W.,
___MURRAY___ COUNTY, MINNESOTA

- 1858 W.J. Niely, U.S. Deputy Surveyor, monumented corner.
- 2008 Ulteig Engineers, Inc., Survey Crew, Bob Kohler Party Chief, placed an 18" x 5/8" rebar with orange Ulteig "40827" cap down 0.3'.
Ties: NE-37.88' to a set spike nail in road shoulder;
SE-31.62' to a set spike nail in road shoulder;
N-33.14' to a mag nail in south face of power pole.